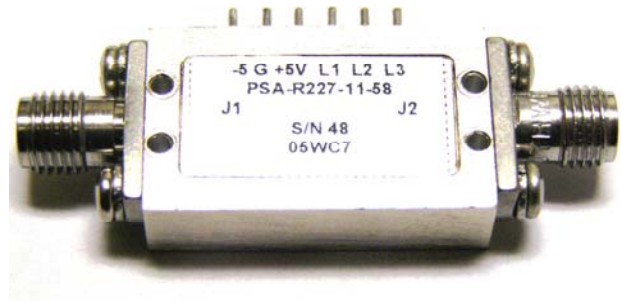


0.2 to 32.0 GHz Test Cable Calibration Assemblies PSA-R232-11-58

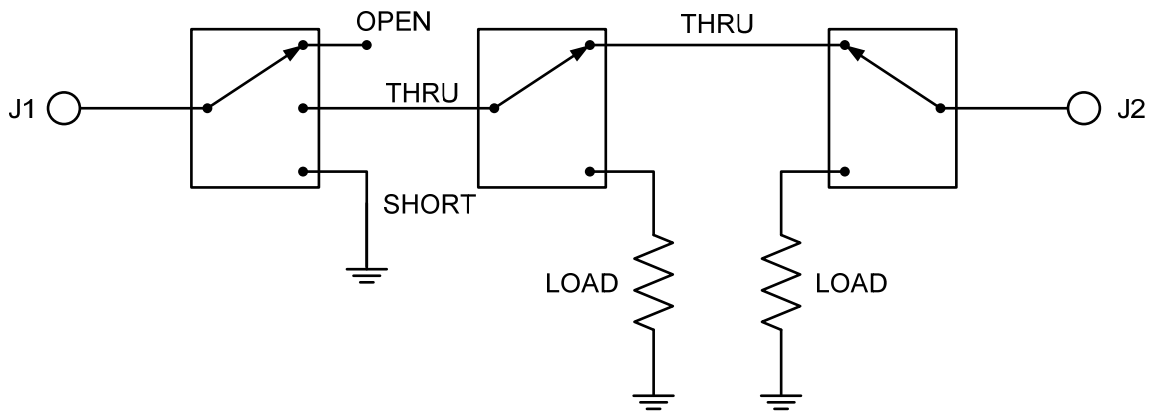
- Remote Switched Terminations
- Open, Short, Load, Thru
- TTL Control
- Low Thru Loss
- Power to +27 dBm
- Custom Versions Available
- Options To 18, 26.5, 32 GHz



Parameter	Specification
Input Frequency Range (GHz)	0.2 to 32.0
Thru Insertion Loss	4.5 dB Max
Output Load Return Loss	Better than 14 dB
Input Short Return Loss	Better than 3 dB
Input Open Return Loss	Better than 3 dB
Input Load Return Loss	Better than 12 dB
Switch Isolation	Better than 50 dB
Switching Speed	Better than 100 ns
Input Survival Power	+27 dBm Max
DC Power	±5 VDC @ 100 mA.
Operating Temperature Range	-10 to +50 °C
Operating Environment	Manufacturing Test Laboratory
Control Signals	TTL Compatible

Pacwave, Inc., is a leading supplier of Microwave Components and Custom Microwave Assemblies. The model PSA-R232-11-58 is a two-port microwave test load module providing TTL selectable thru, open, short or 50 ohm termination load on the input port, and thru or 50 ohm termination load on the output port. This module permits test set calibration of coaxial cables, with far end termination types to be TTL controlled, where the cable far ends are in inconvenient locations such as inside vacuum or thermal chambers. Therefore, these modules permit recalibration of the test cables without breaking chamber vacuum or altering chamber temperature. This can save considerable time in production test situations. The entire assembly is packaged in an environmentally sealed enclosure and is designed to operate in manufacturing test laboratory environments. The unit features solder pin connections* for DC power and TTL control commands. This unit can additionally be customized for specific requirements, such as frequency changes, improvements on return loss and or insertion loss, and operating temperature range. Please contact Pacwave for more information.

* - Note: Micro-D connector is available in lieu of solder pins. Please call Pacwave for details.



Functional Block Diagram

FUNCTION	L1	L2	L3
SHORT	HI	X	HI
OPEN	LO	HI	HI
LOAD	LO	LO	HI
THRU	LO	LO	LO

Logic Table

REVISIONS		
ZONE	REV	DESCRIPTION
	-	INITIAL RELEASE

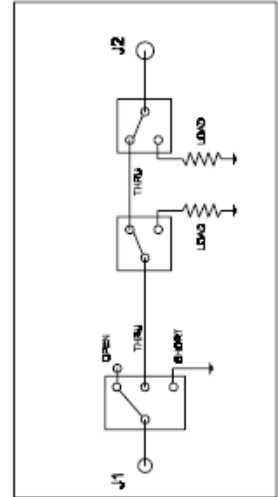
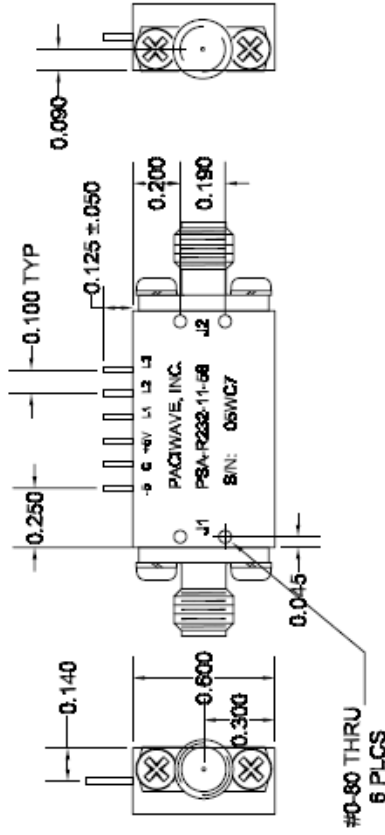
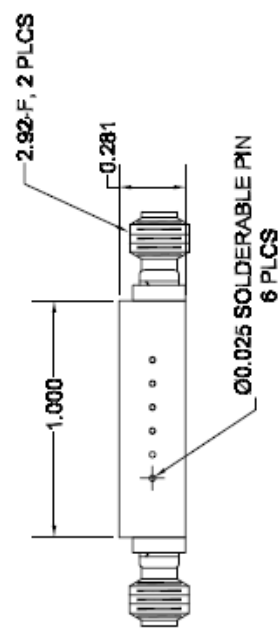
SWITCH ASSEMBLY ELECTRICAL SPECIFICATIONS

INPUT PORT - J1		OUTPUT PORT - J2		
CONDITIONS	RETURN LOSS	LOSS	CONDITIONS	RETURN LOSS
THRU	> 12 dB	3-9dB	THRU	> 12 dB
SHORT	< 3 dB	> 50 dB	LOAD	> 14 dB
OPEN	< 3 dB	> 50 dB	LOAD	> 14 dB
LOAD	> 12 dB	> 50 dB	LOAD	> 14 dB

- * FREQ. : 200 TO 32,000 GHz
- * DC SUPPLY: +5V @ 100mA, -5V @ 100mA
- * LOGIC CONTROL TTL
- * POWER SURVIVAL: +27dBm
- * PHASE ANGLE BETWEEN REFLECTIONS: 180° ±30°
- * LOAD RETURN LOSS ±0.5dB (-10°C TO +50°C)

LOGIC TABLE

FUNCTION	L1	L2	L3
SHORT	HI	X	HI
OPEN	LO	HI	HI
LOAD	LO	LO	HI
THRU	LO	LO	LO



PROPRIETARY

MODEL NO. PSA-R232-11-58	DATE
PACI WAVE 743 N. PASTORIA AVENUE SUNNYVALE, CA 94086 USA	SWITCH BY
SWITCH NO. B 05WC7	DRAWN BY P. KADAKIA
SIZE B	SCALE 1 OF 1
SWITCH ASSEMBLY PRELIMINARY	REV

Outline Drawing